



**BARKLEY
COMMUNITY
FOREST**
CORPORATION



The Barkley Community Forest

The Barkley Community Forest on the traditional territory of the Toquaht and Yuułuꞑiꞑath First Nations.

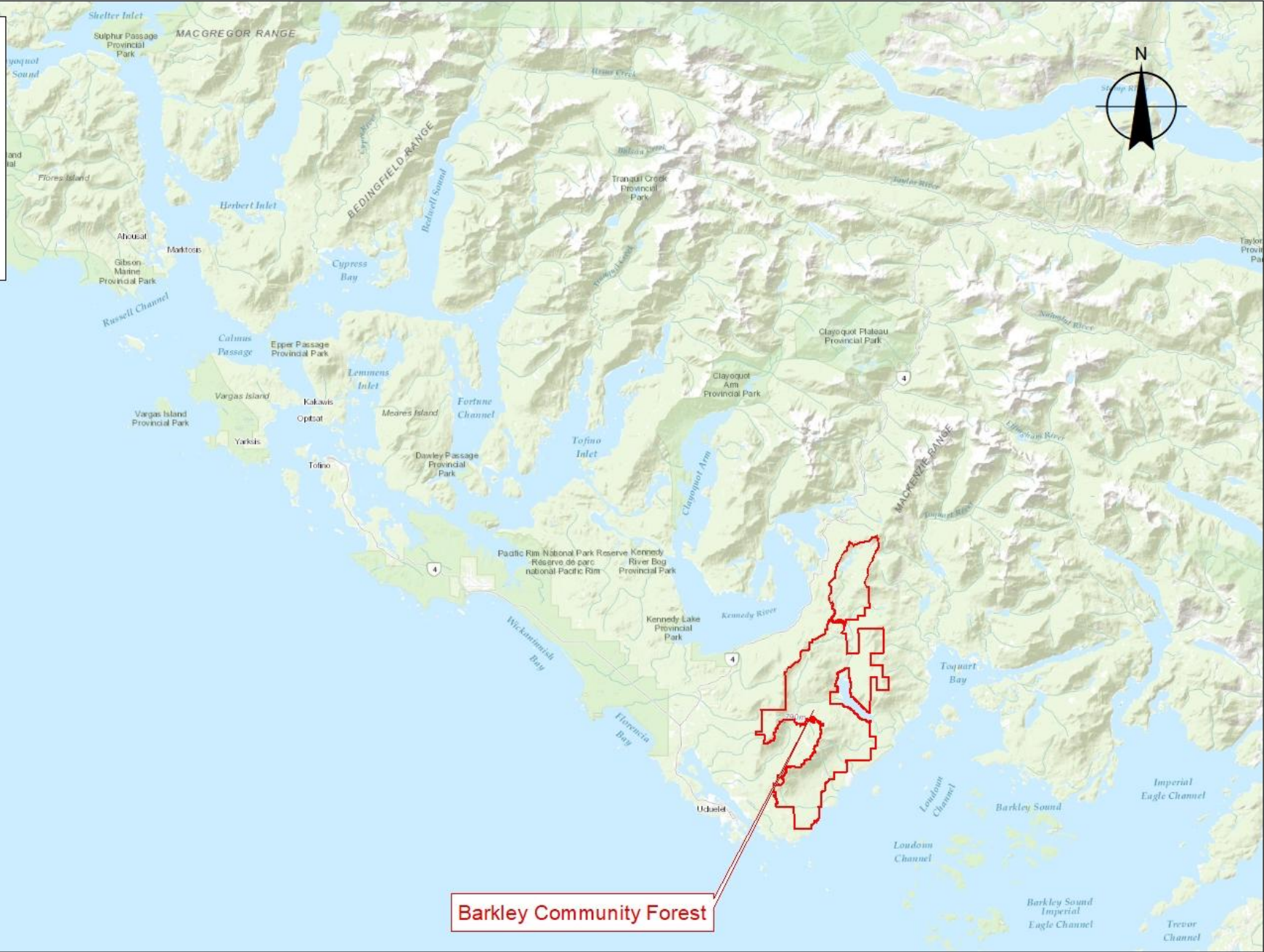
Licence awarded in 2015 with an AAC of 27,000 m³/year.

50/50 partnership between the Toquaht Nation and the District of Ucluelet.





Barkley Community Forest



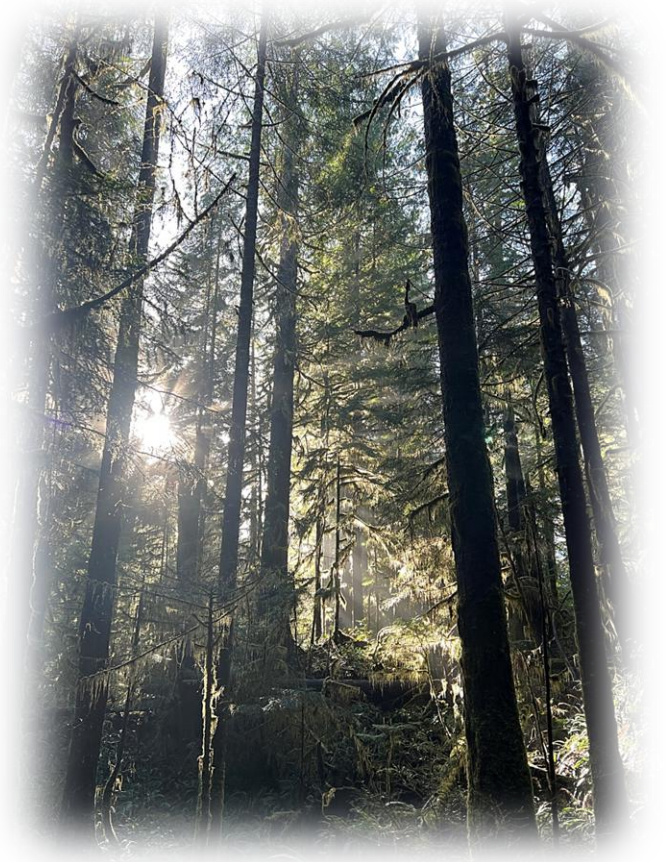
Why a New MP and Timber Supply Analysis?

1. Concern about the long term sustainability of the allowable annual cut.
2. Need for an “old growth management strategy”.



Old Growth Management Strategy

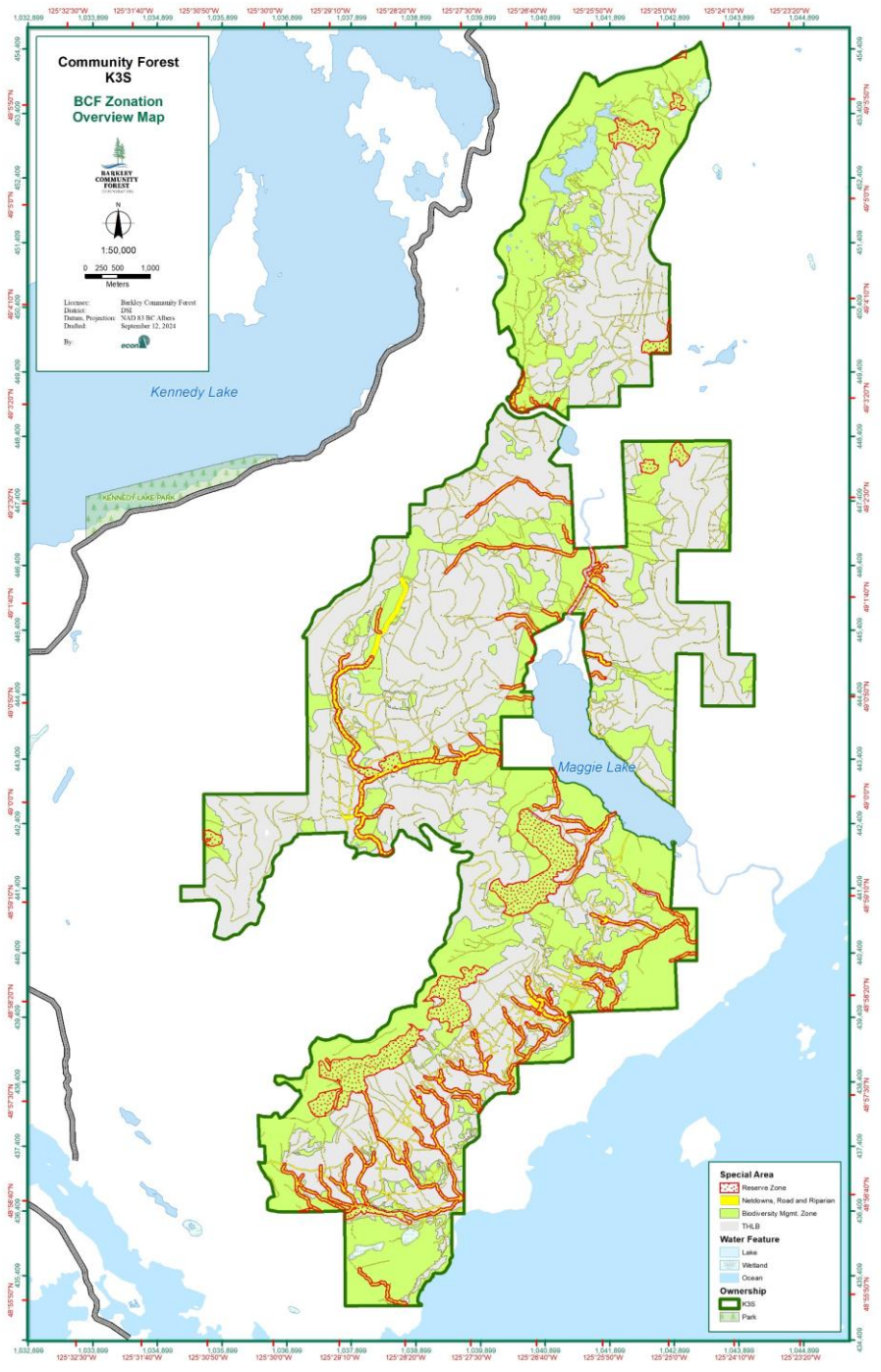
- Objectives:
 - Maintain or recruit representation of all ecosystems within the community forest in an old growth condition.
 - Retain all rare ecosystems and habitat for threatened or endangered species.
 - Maintain connectivity between representative ecosystems.
 - Maintain a minimum of 25% of the Barkley CF as old forest in the near to mid-term.



Biodiversity Management Zone

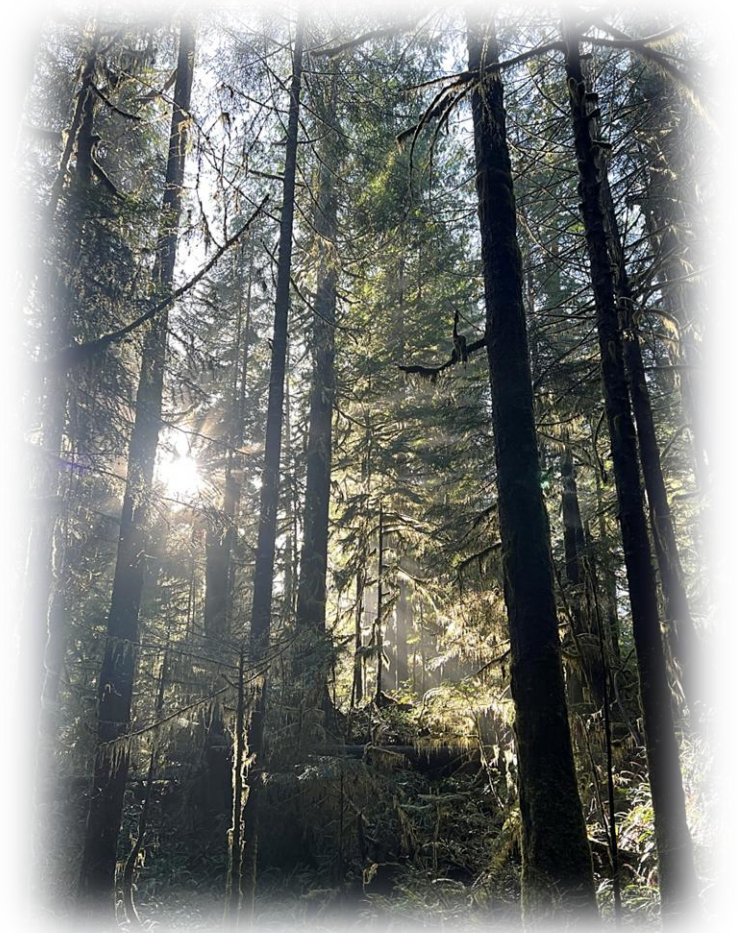
- BMZ Establishment Process:
 1. Anchored by old growth (age class 7+) and statutory reserves (WHA, Marbled Murrelet Habitat etc.)
 2. Addition of areas with high non-timber values (cultural sites, riparian corridors, visually sensitive areas)
 3. Consideration given to physically and economically inoperable areas.
 4. Additions to provide connectivity and ecosystem representation.
- Encompasses 2,720 ha or 41% of the CF including 1,154 ha reserve zone (15% reduction in the THLB from MP #1.)
- Based on provincial TEM data, the BMZ encompasses at least 30% of the range of site series within the Barkley CF.





Changes to the Timber Supply Analysis

1. Better inventory information.
 - Most recent consolidated VRI (not perfect, but better).
 - LiDAR derived stream and road layers.
2. Updated spatial net-downs.
3. Aspatial net-down assumptions that reflect current realities and expectations – 10% operability and 7% WTRA.
4. BMZ excluded from the THLB with some Cw leading old growth modelled during transition to 100% second growth.
5. Older minimum harvest ages (90% of culmination) and minimum 120 years old on slopes over 65%.



Timber Supply Analysis Results

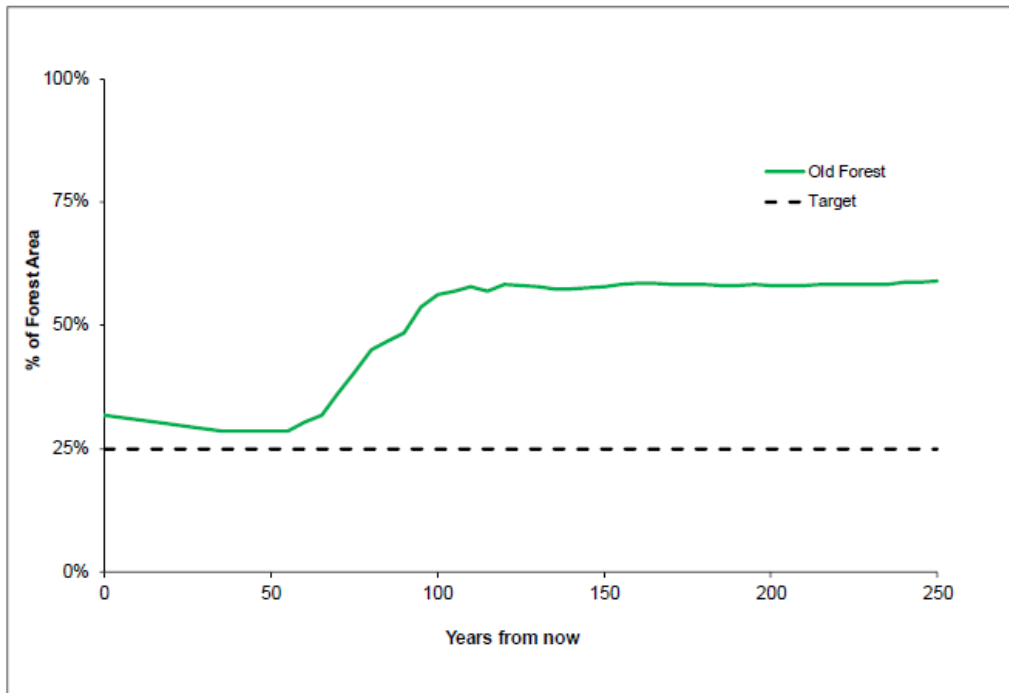
- 54% AAC reduction to 12,600 m³/year.
- Long term AAC increase to 19,645m³/year.
- Old forest representation increases to ~58% over time.
- Higher volume and value second growth stands at rotation age.

Inventory data requires continuous improvement and assumptions need to be monitored.

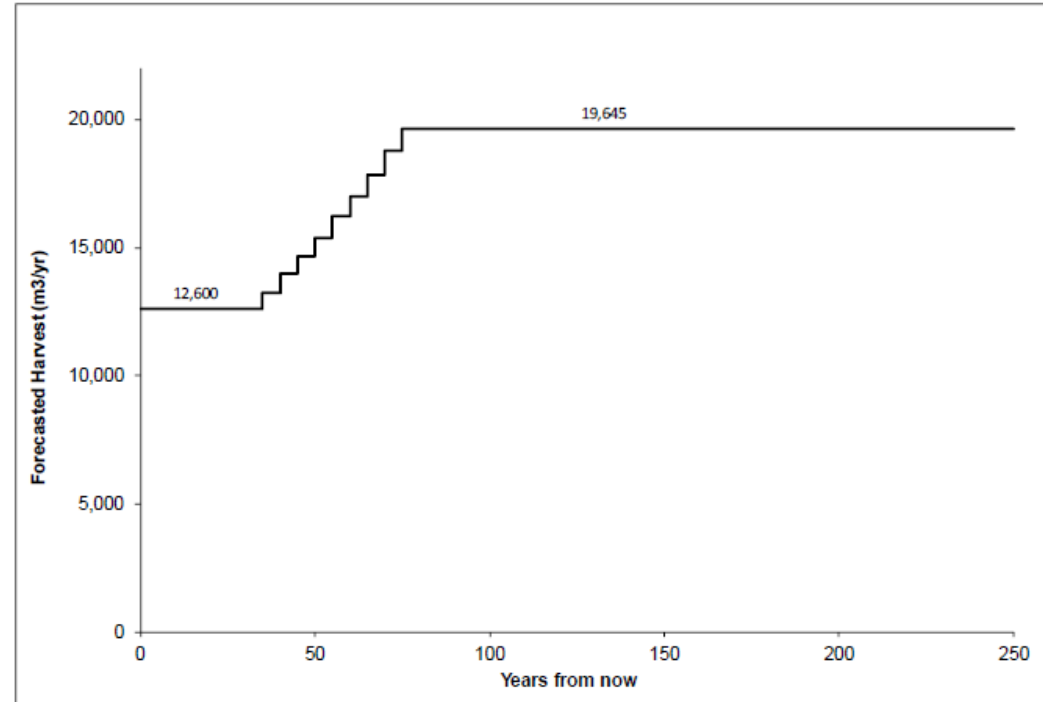


Better From Here

Increasing Old Forest:



Increasing AAC:



Conclusions

1. Increases our confidence that we can operate the community forest business in perpetuity.
2. Allows for more accurate budgeting and forecasting for both the BCFC and supply chain partners.
3. Creates more space for the integration of traditional indigenous and western scientific knowledge.
4. Improved coarse filter biodiversity management strategy.
5. Enables transparent public communication.
6. Provides context and confidence to site level decisions.
7. Sets expectations for the future at time when the trade economic trade offs are easier to make.
8. Provides a positive outlook for future generations.



An aerial photograph of a dense forest. A winding dirt road or path cuts through the trees, creating a zig-zag pattern across the landscape. The trees are mostly green, with some brown patches indicating cleared areas or dead trees. The text "THANK YOU!" is overlaid in the center of the image in a white, sans-serif font.

THANK YOU!