



Old Growth and Westbank First Nation Community Forest

BCCFA Virtual Conference October 2021

Dave Gill, Mic Werstuik



WFN's Perspectives on “What is Old Growth”?

- More than age
- Human activities have and will continue to impact old forests
- Indigenous land stewardship has historically co-existed with old forests
- Old forests (particularly in the Interior) need to be stewarded with locally developed values, goals and principles.
-or be permitted to have natural processes run their course.

“How do we
ensure we
have old
forests seven
generations
from now?”

How much?

Where?

Stewardship Principles



Old Forest?



This Photo by Unknown Author is licensed under [CC BY-NC](#).













WFN Seven Generation Stewardship Plan

A Vision for our forests seven generations
from now

Old forests are but one of the values

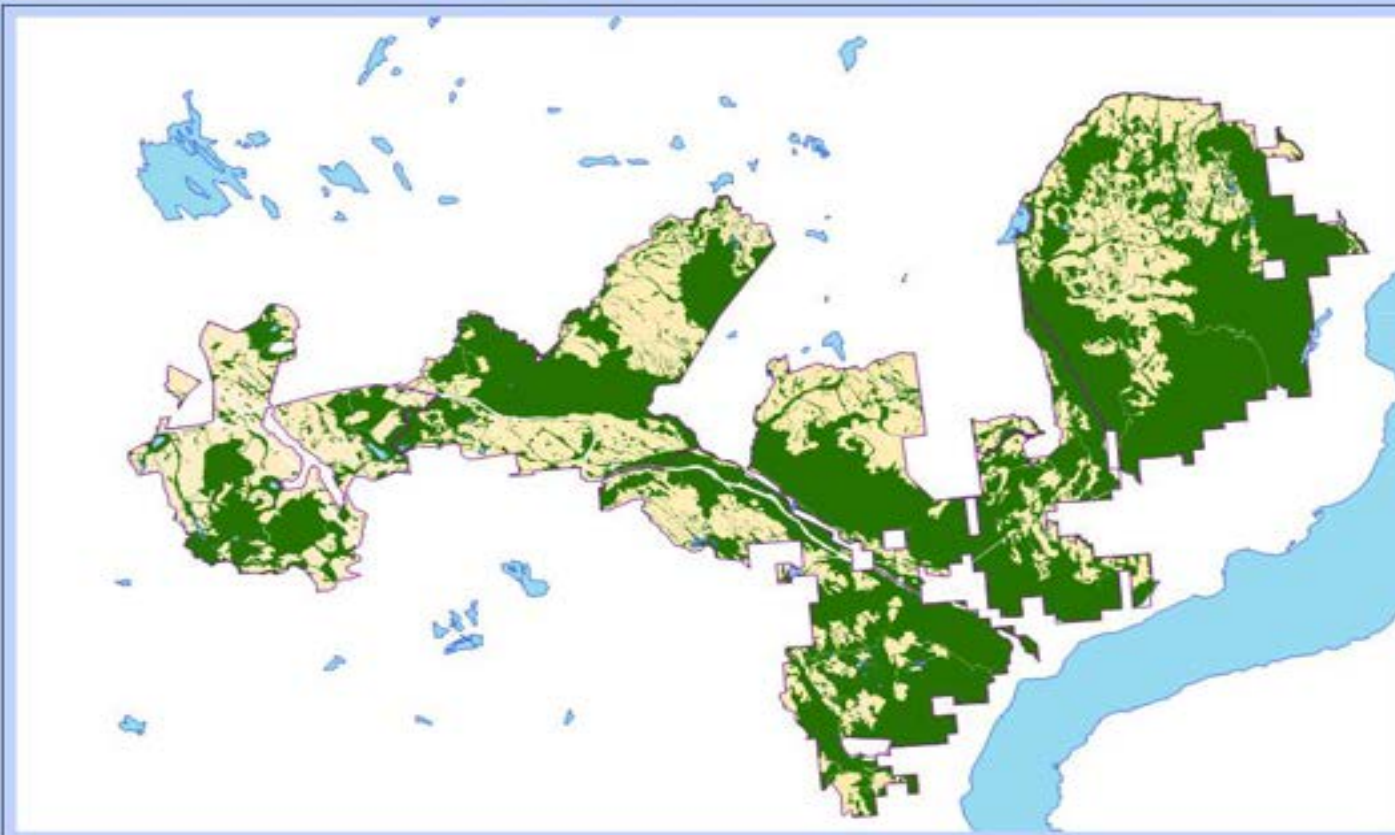
WFN Stewardship Zones

- Forest Operations Stewardship Zone (stewarded for multiple values including timber production)
- Old Forest Stewardship Zone (stewarded primarily for old forest values)



NTITYIX
RESOURCES LP

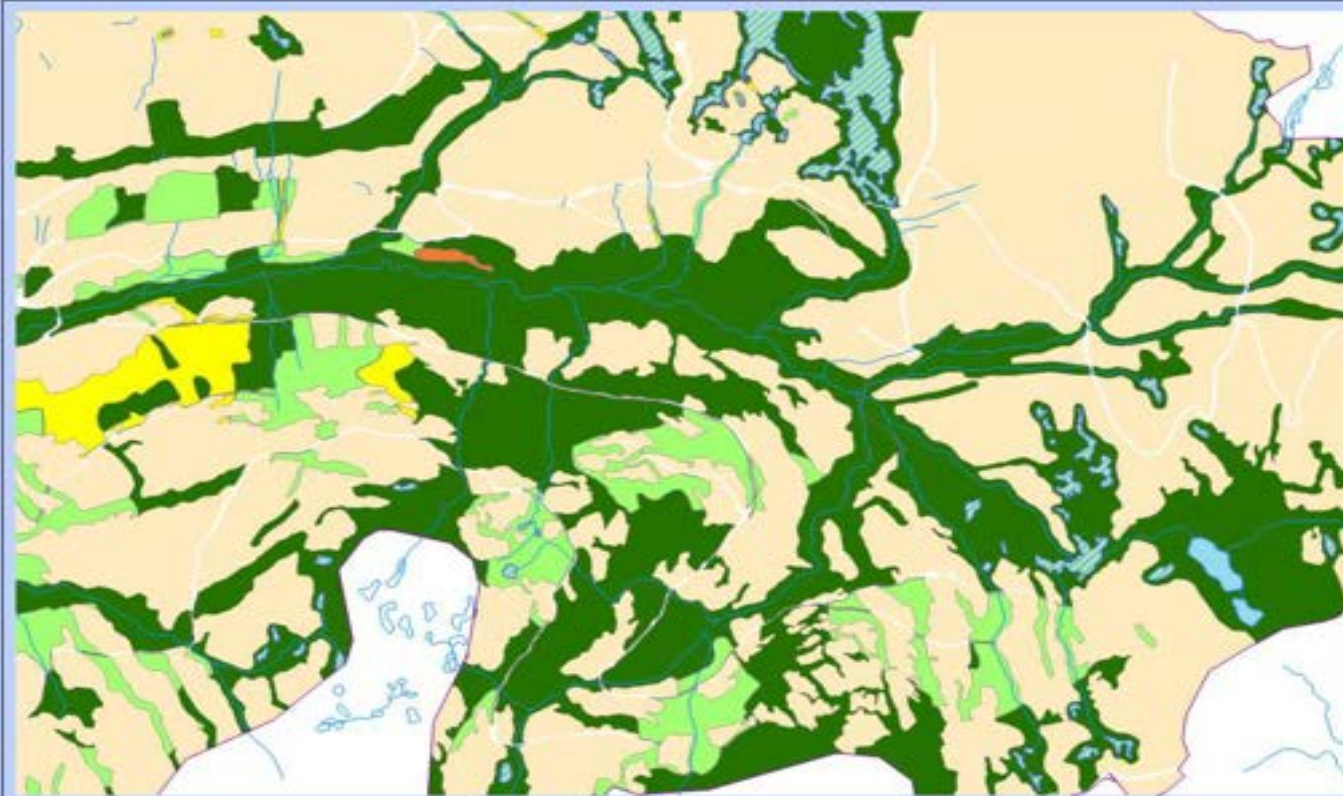
WFN - Stewardship Zones - Okanagan West



Legend

- WFN Planning Area
- OFSZ
- FOSZ

WFN - Old Forest Stewardship Zone - Seral Stage



Legend

WFN Planning Area

FOSZ

OFSZ

Seral

Dec

E

M

Me

O

R

Summary



Old forests need to be cared for

Like our forest, our plan is not static

Old forests in the right places

Stewardship principles to recruit, maintain, and protect healthy old forests

Thank-you

Dave Gill, RPF - General Manager Ntityix Resources LP

Mic Werstuik, MBA – Community and Business Development Officer