



SUNSHINE COAST
COMMUNITY
FOREST

Presentation to BCCFA – Community Benefits Session

Warren Hansen, Managing Forester

Locally Grown

What is Sunshine Coast Community Forest?

- In the shíshálh swiya
- Established in 2006
- Owned by the District of Sechelt
- Non-profit, and CRA designated Qualified Donee
- 15,000m³ AAC and 10,800ha

Local People. Local Forests. Local Decisions.
For Local Benefit



Community-led

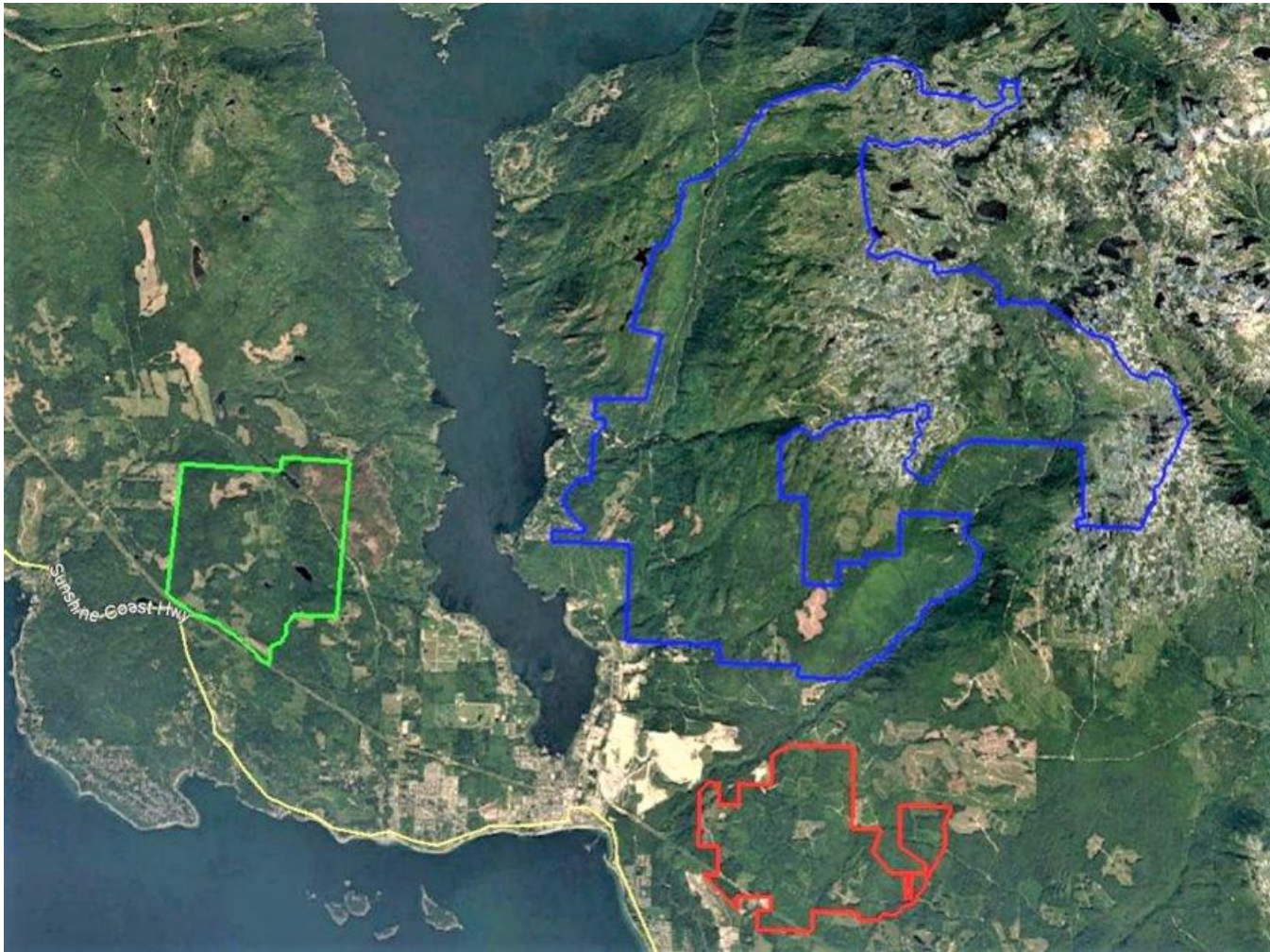
Meet the current Board



- 9-member volunteer board
- Sets Policy & Provides Oversight
- Community Engagement
 - Advisory Panel
 - Events
 - Communications program



Where Is the Sunshine Coast Community Forest?



1

Less than 1% of logging on the Sunshine Coast

2

0.2% annual average footprint

3

Prioritize local employment and local log sales



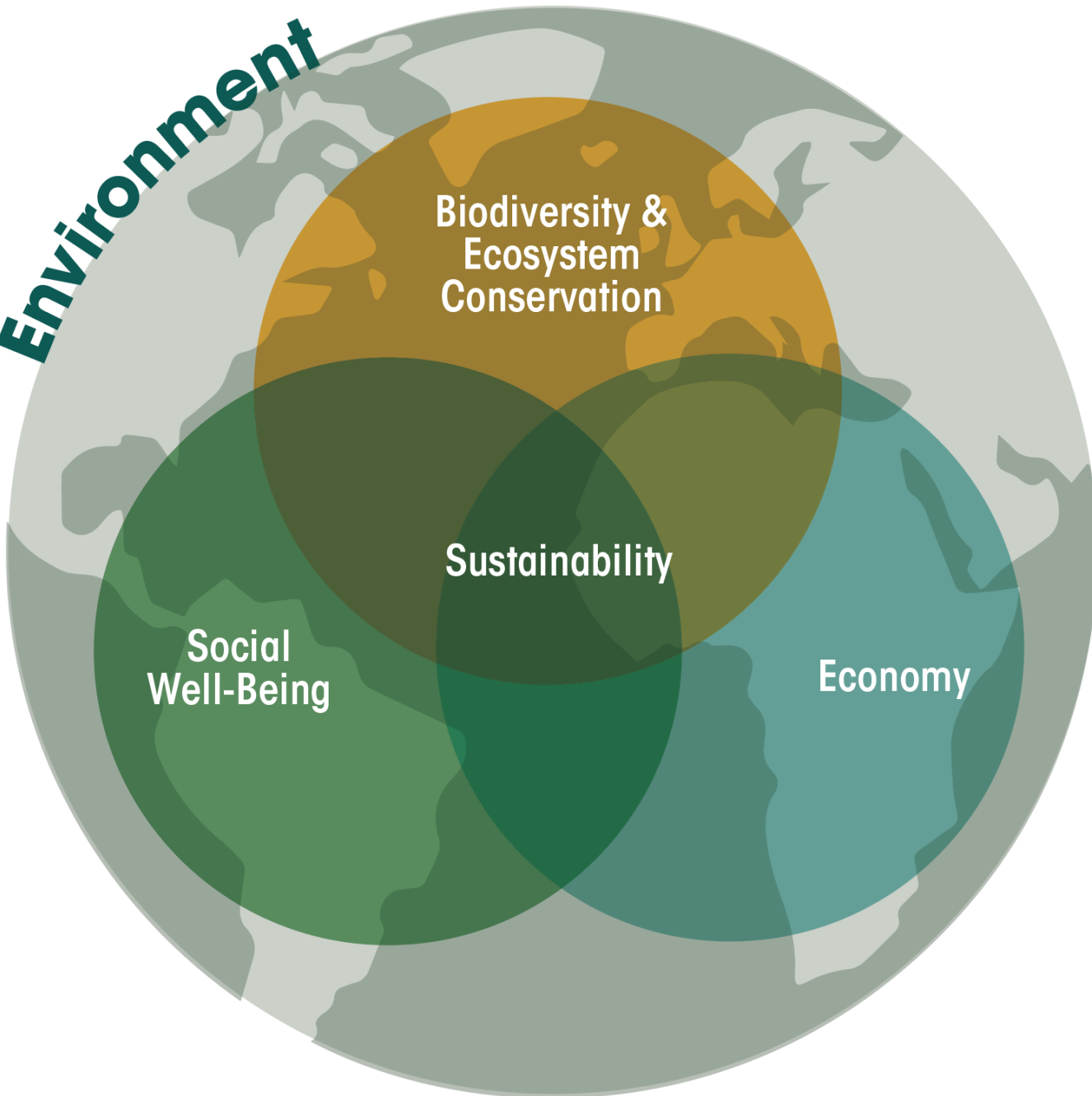
Legacy Fund: Enduring Economic Benefits

- Established in 2014 to fund community grants
- Jointly administered by SCCF & Sechelt
- **\$3,800,000** contributed to fund and **\$2 million** in grants made
- Creating an endowment to maintain an ongoing community grant program

Project Highlight:
\$100,000 for Davis Bay Wharf (2014)



Environment



Ecosystem Based Management

One Comprehensive Strategy aimed at protecting and enhancing sustainability, diversity and productivity of natural resources by integrating three key factors



Biological

- Protecting at-risk species and ecosystems
- Supporting habitat restoration
- Old growth recruitment strategy



Economic

- Local contractors
- Local sales
- Profits reinvested in the community forest



Social

- Community Drinking water Management
- Connecting community to forest through education and recreation opportunities

Sunshine Coast Community Forest Benefits





SUNSHINE COAST
COMMUNITY
FOREST

Q Search...

[Home](#)

[Events](#)

[Forestry](#)

[Firewood](#)

[Legacy Fund](#)

[About](#)

Welcome to the Sunshine Coast Community Forest

Community First

[Top of Page](#) ●

[News](#) ○

[Events](#) ○

[Newsletter](#) ○

www.sccf.ca

Connect with us

