

An aerial photograph of a vast forest landscape. In the center, a wide, open meadow with yellowish-green grasses and patches of pink flowers stretches across the valley. A small, winding stream flows through the meadow. The meadow is surrounded by dense, dark green coniferous forests. In the background, rolling hills and mountains are visible under a blue sky with light clouds. The overall scene is a mix of natural beauty and forest management.

Stewardship and Timber Supply – The Seven Generation Approach

Westbank First Nation Community Forest



- 47,014 ha
- Managed by Ntityix Resources
- Syilx Okanagan Territory
- Influenced by:
 - Westbank First Nation community values and expectations
 - Community watersheds
 - Mule deer winter range
 - Wildfire risk
 - History of pine beetle salvage



Seven Generation Plan and Syilx Forestry Principles

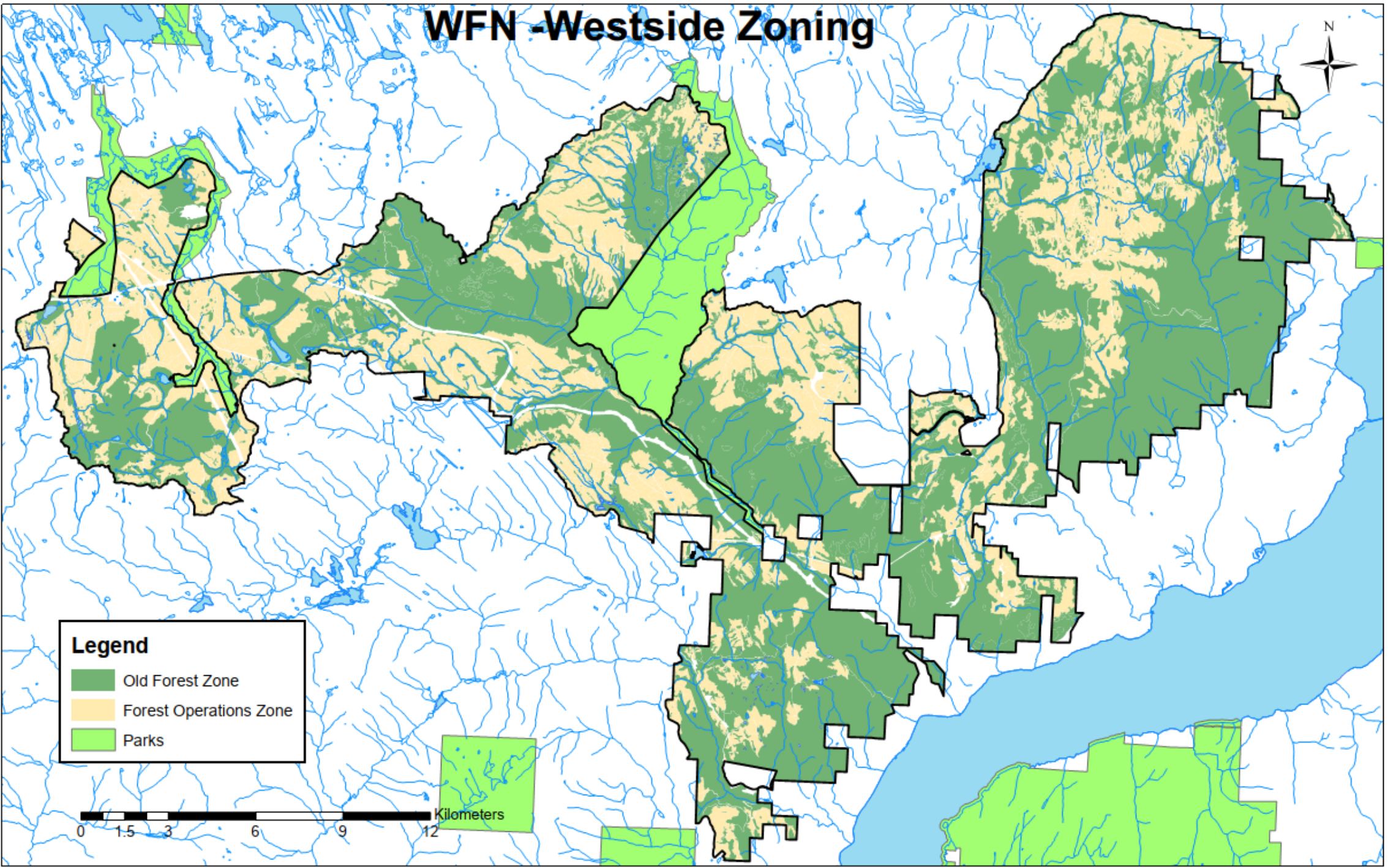
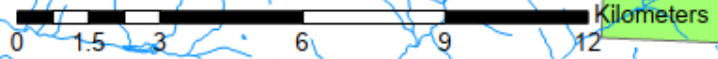
- Syilx Forestry Principles developed by the Okanagan Nation Alliance (ONA) Forestry Working Group
- Seven Generation Plan operationalizes the Syilx Forestry Principles
- Zonation approach
 - Old Forest Zone
 - Forest Operations Zone
- Plan is adaptive
- Management strategies informed by monitoring program

WFN - Westside Zoning



Legend

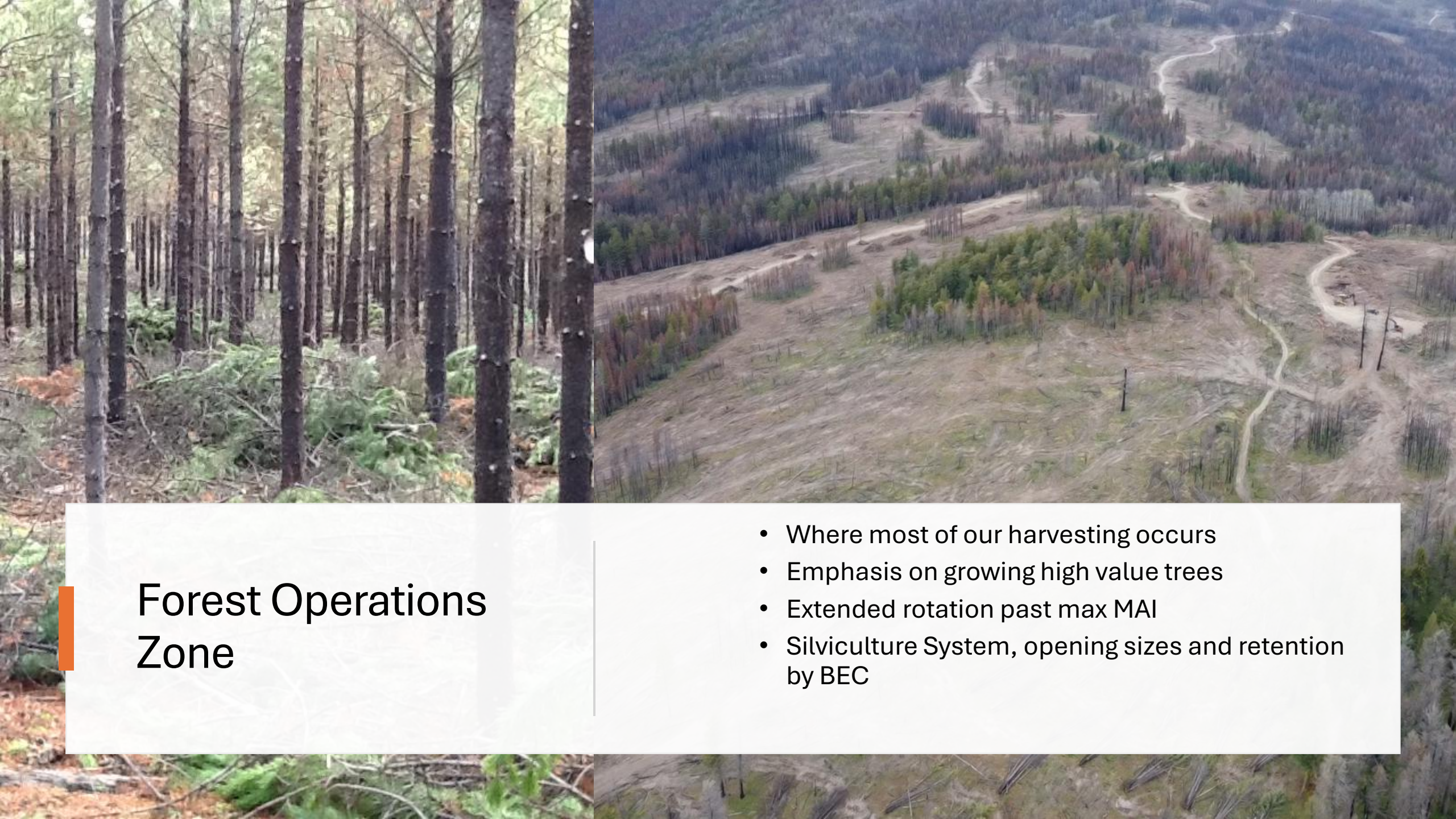
- Old Forest Zone
- Forest Operations Zone
- Parks





Old Forest Zone

- Protect, promote or enhance old forest values
- Water
- Wildlife
- Cultural Values
- Connectivity
- Light touch harvesting
- Prescriptions determined by BEC



Forest Operations Zone

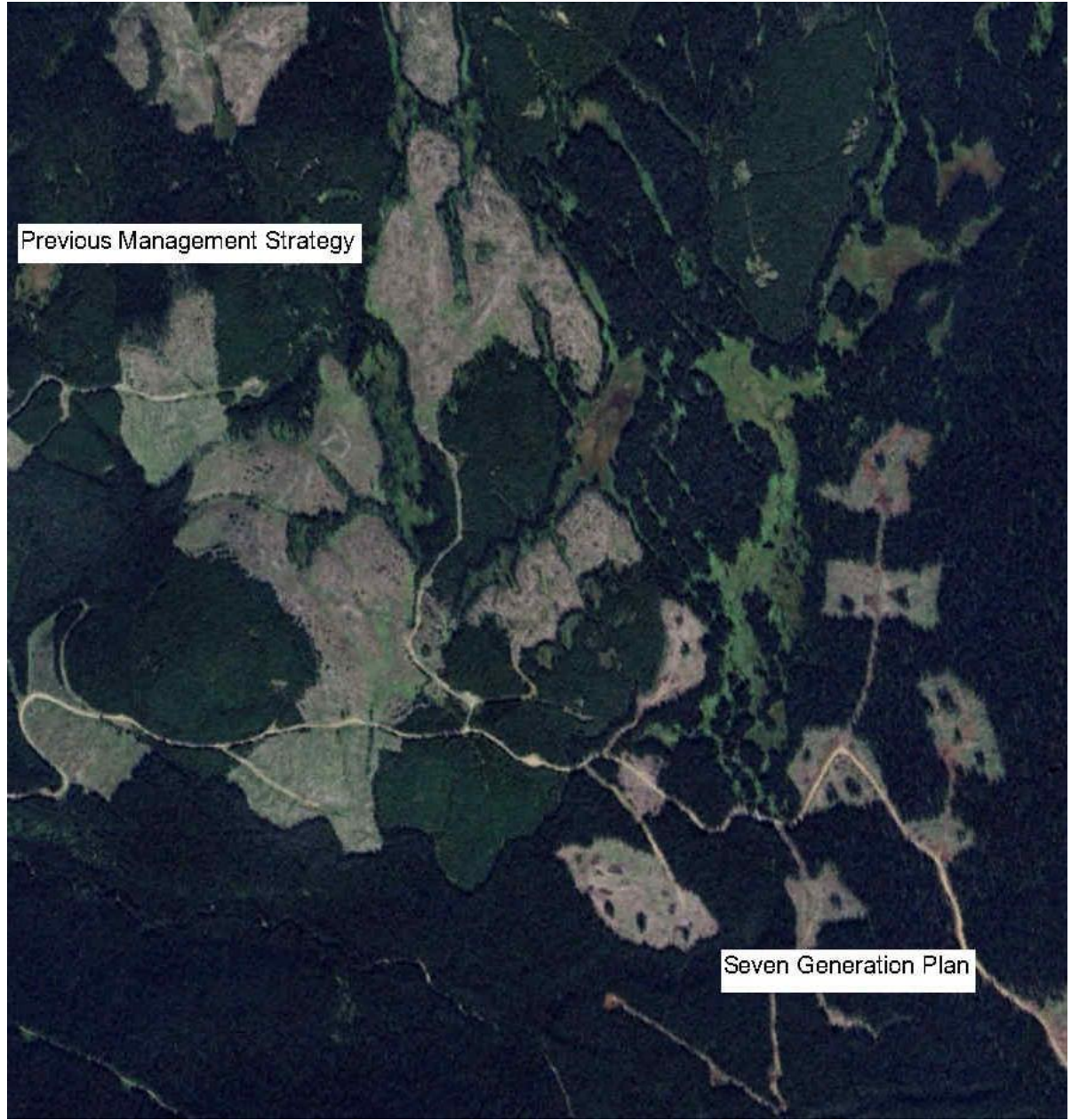
- Where most of our harvesting occurs
- Emphasis on growing high value trees
- Extended rotation past max MAI
- Silviculture System, opening sizes and retention by BEC



Partial cutting

To address:

- Mule Deer Winter Range – Snow Interception Cover
- Grass ingress in clear cuts
- Difficulty regenerating Douglas fir
- Community Values
- Recreation
- Wildfire resiliency
- Public Perception



Previous Management Strategy

Seven Generation Plan

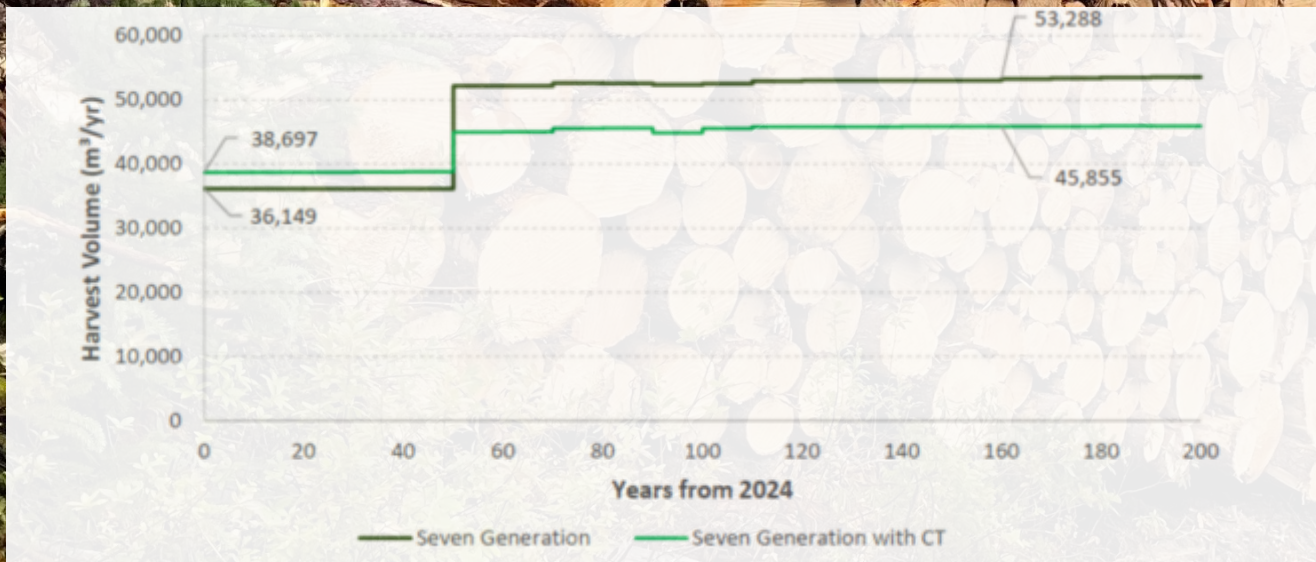
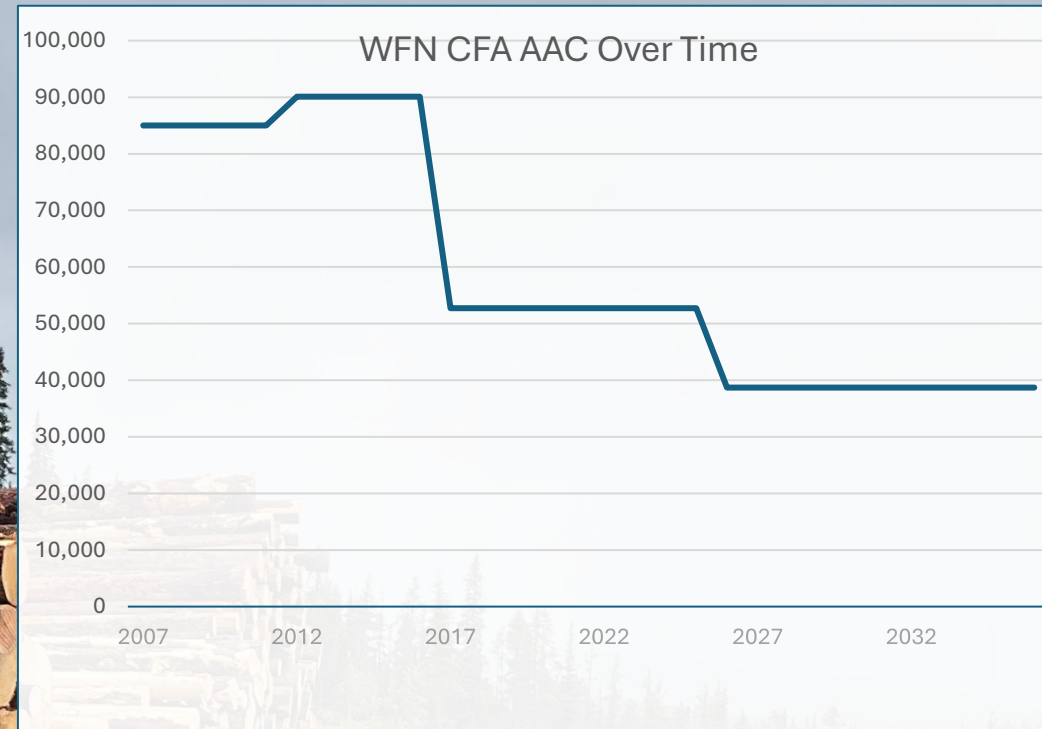
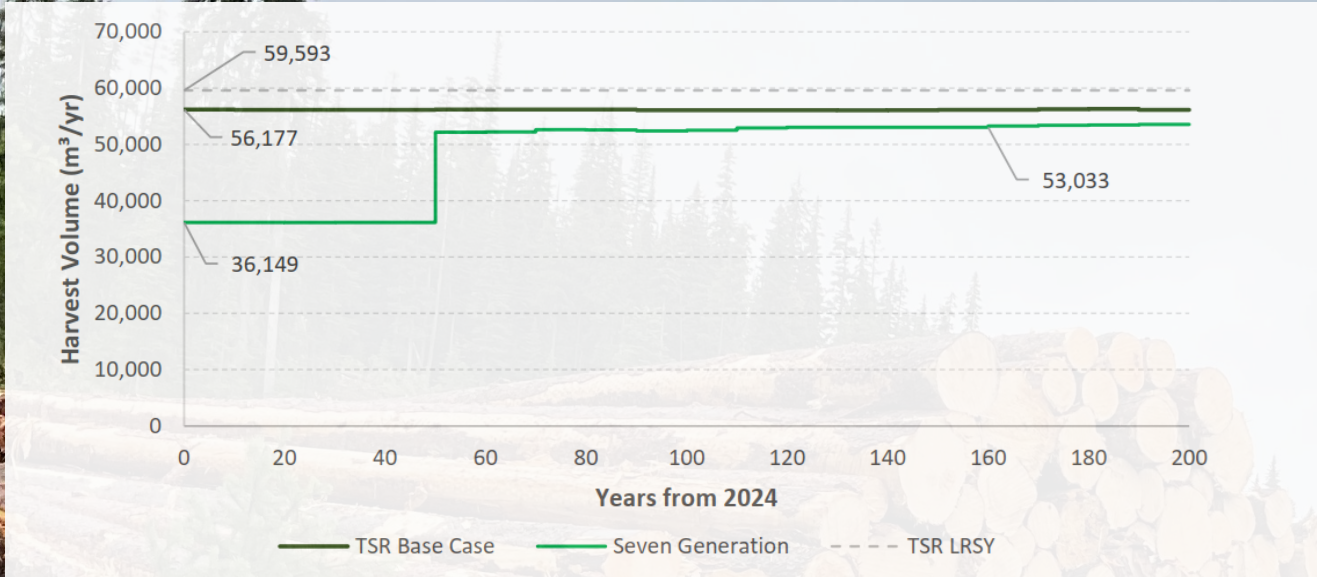
Management changes that influenced fibre supply

Management changes incorporated into TSR

- OFZ implementation – small volume removal
- Majority of volume coming from FOZ
- Extended rotation
- ECA limit of 35%
- Partial cutting in IDF
- Commercial thinning (upcoming)
- Limiting steep slope harvesting
- Increased retention

Previous Approach	Seven Generation Management
Larger block size	Smaller openings
MAI based rotation	Extended rotation
Main Silv. System: clearcut with reserve	More partial cutting and variable retention
Managing Old Growth to OGMA	Old forest Values within Old Forest Zone

Impacts to AAC



Early Outcomes

- Better connectivity for wildlife
- Better regeneration success in the IDF—more resilient to, drought, less grass competition.
- Better community relationships
- Better public perception
- Greater alignment with Sylix values
- Less pressure on an over harvested landscape
- Higher costs
- Increased challenges to logging
 - More skills required
 - Getting contractors on board (a new way of thinking)
- Longer temporary roads
- Some issues with blowdown
- Impact to AAC

Ongoing Monitoring and Adaptation

Wildfire Risk Reduction





Community Forests' Role in a Changing Industry

Community Forests are uniquely positioned to be leaders in BC's forest industry because they:

- Have the flexibility to be innovative
- Have an obligation to manage to the community's values and be accountable to them
- Manage local landscapes in area-based tenures with a stewardship focus

AAC should reflect

- Real operability and timber availability
- Ecological limits
- Long term resilient forests
- Community values

Future planning requires

- Scenario analysis using good data
- Adaptive management
- Integration of Indigenous knowledge and western science
- Investment in stewardship and social licence