



BRITISH  
COLUMBIA



# Wildfire Risk Reduction

## Ministry of Forests

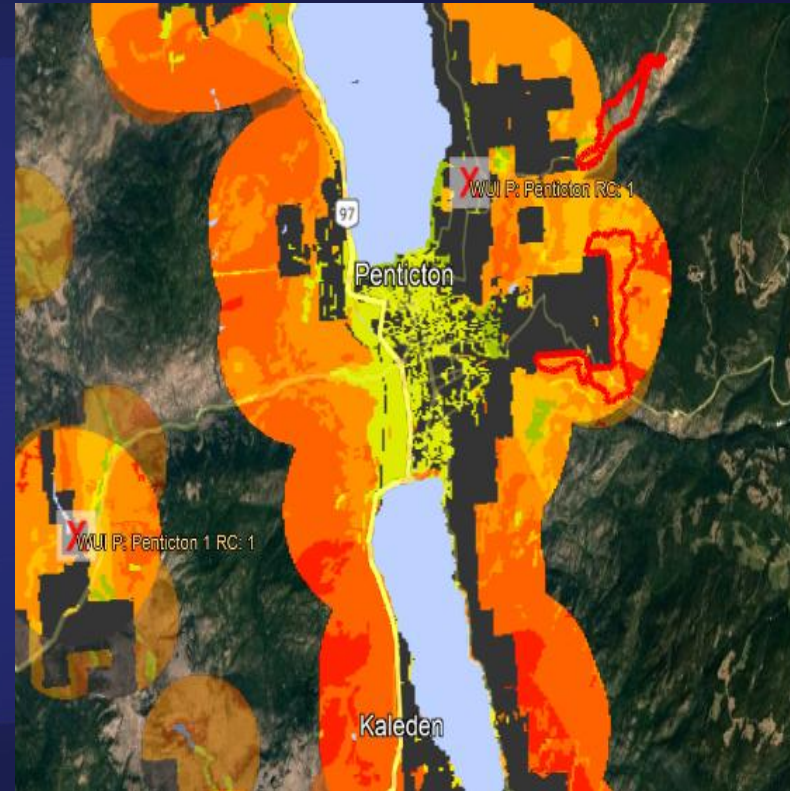




## What Do We Work On?

### Where are our projects generally located?

- Wildland Urban Interface (WUI) is the area within 2 km of a community with a minimum density of 6 structures per square kilometer.
- Strategically targeting landscape level fuel breaks (large scale).



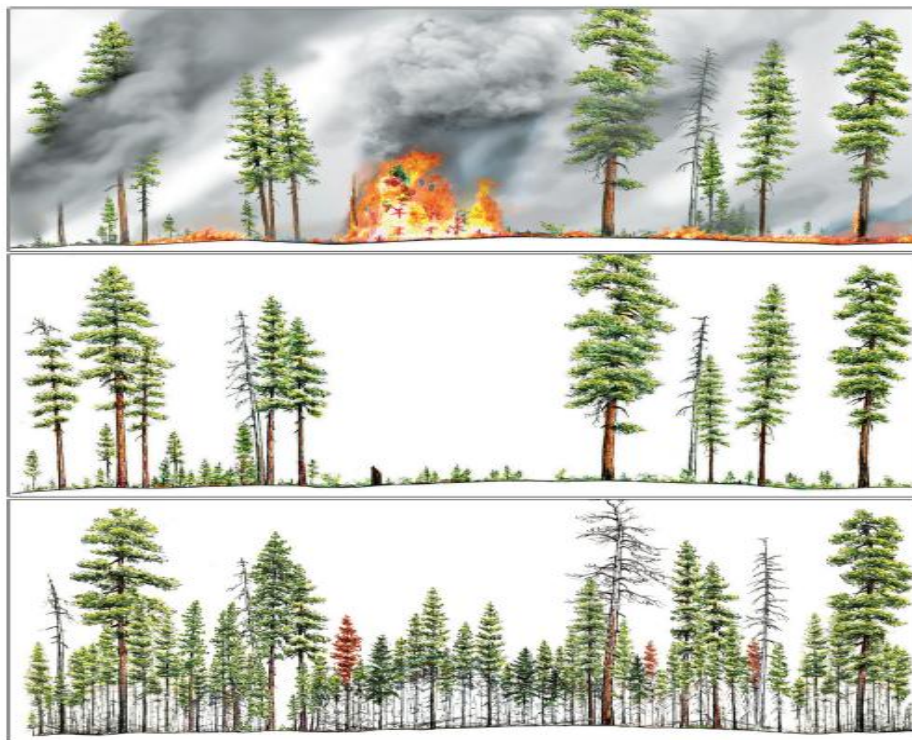
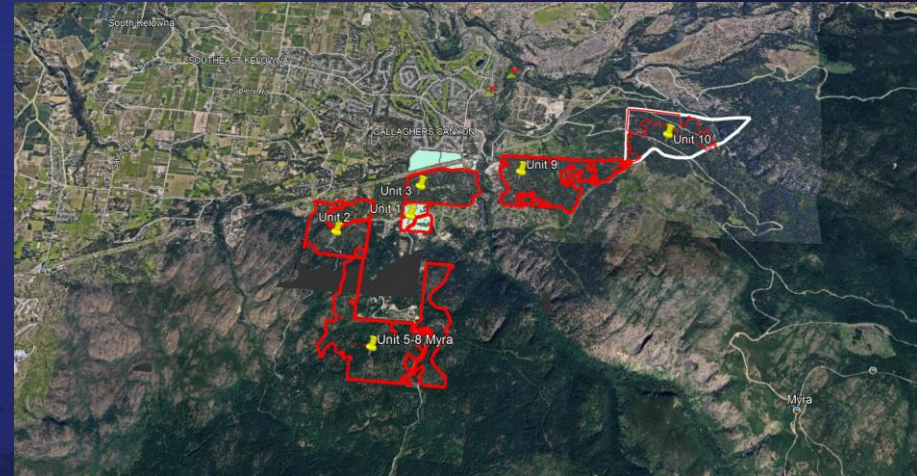
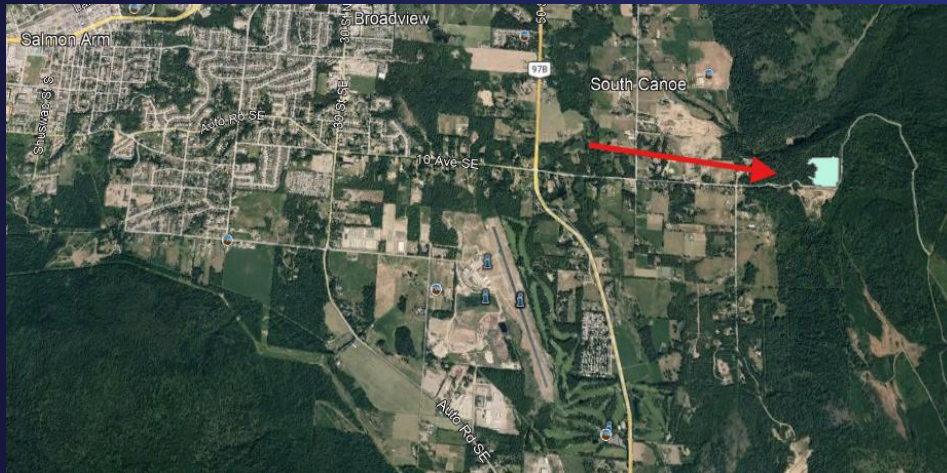


FIG. 4. Conceptual diagram of low and moderate severity fire effects on post-fire residual structure. Top: frequent fire reduces surface and ladder fuels. Middle: gradual accumulation of live and dead fuels between fires. Bottom: conditions after prolonged fire exclusion. Forest is denser and more layered, and high-severity fire is likely. Drawing credit: Robert Van Pelt.



BRITISH  
COLUMBIA

# Postage Stamp vs. Landscape





# WUI WRR PLAN

## Okanagan Shuswap Natural Resource District

- First Nations
- Tenure Holders - incl. Community Forests
- BC Wildfire Service
- Local Government

# KEYS TO SUCCESS

3 C's

- Communication
- Collaboration
- A willingness to Change





BRITISH  
COLUMBIA



BRITISH  
COLUMBIA  
Ministry of  
Forests

THANK YOU

Brent Lipinski

Land and Resource Coordinator

Ministry of Forests

Okanagan Shuswap Natural Resource District

*I acknowledge with gratitude that I live and work on the territories of Indigenous Peoples who have been here since time immemorial.*