



Monashee Community Forest

A Partnership Established in 2013 Between:
Yucwmenlúcwu (Caretakers of the Land) and the Village of Lumby

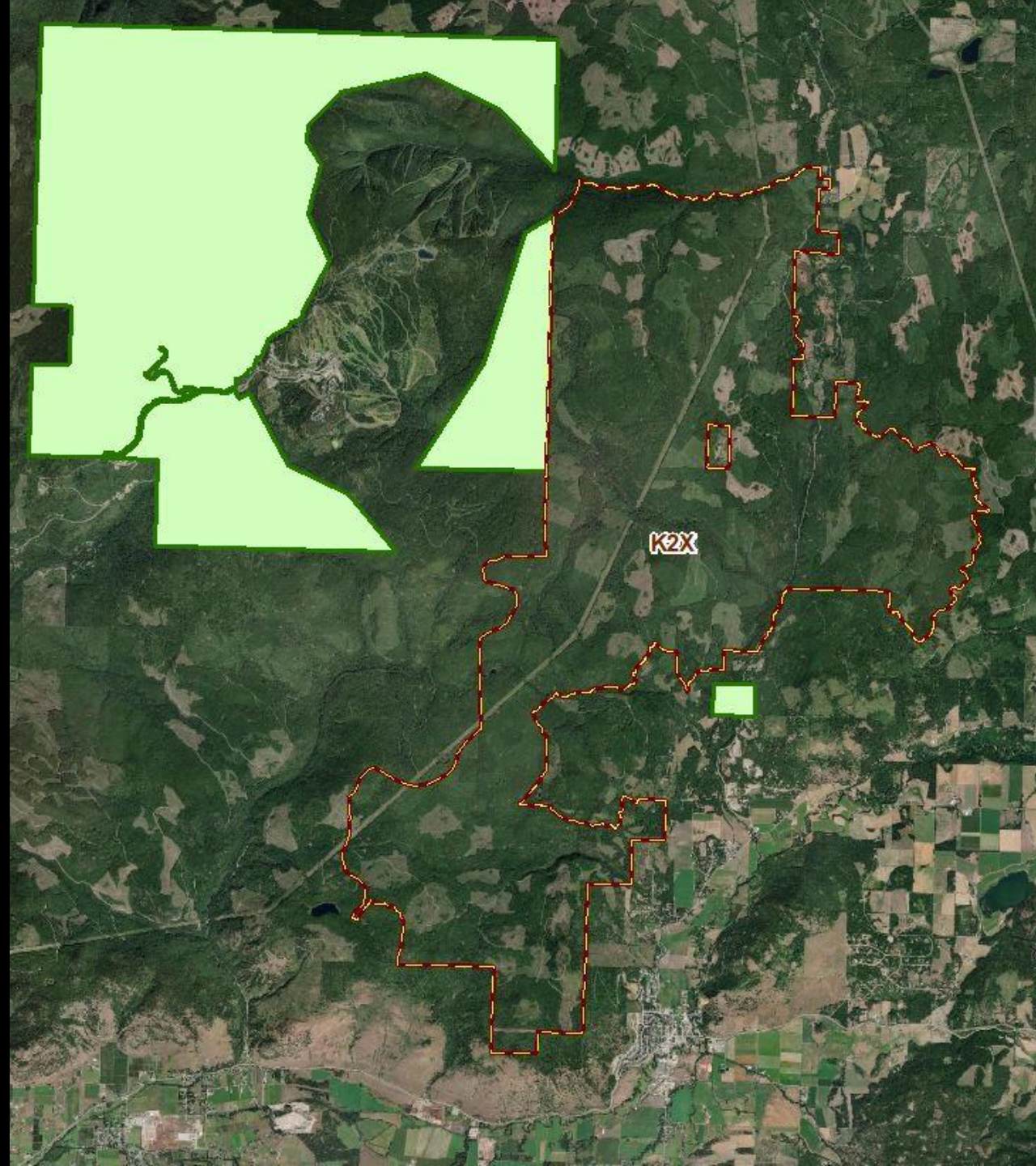
**WRR & Silvopasture
BCCFA 2026 Field Tour**

MCF Overview

The Monashee Community Forest is managed at a landscape scale, balancing forest health, community priorities, and long-term sustainability.

Our approach emphasizes:

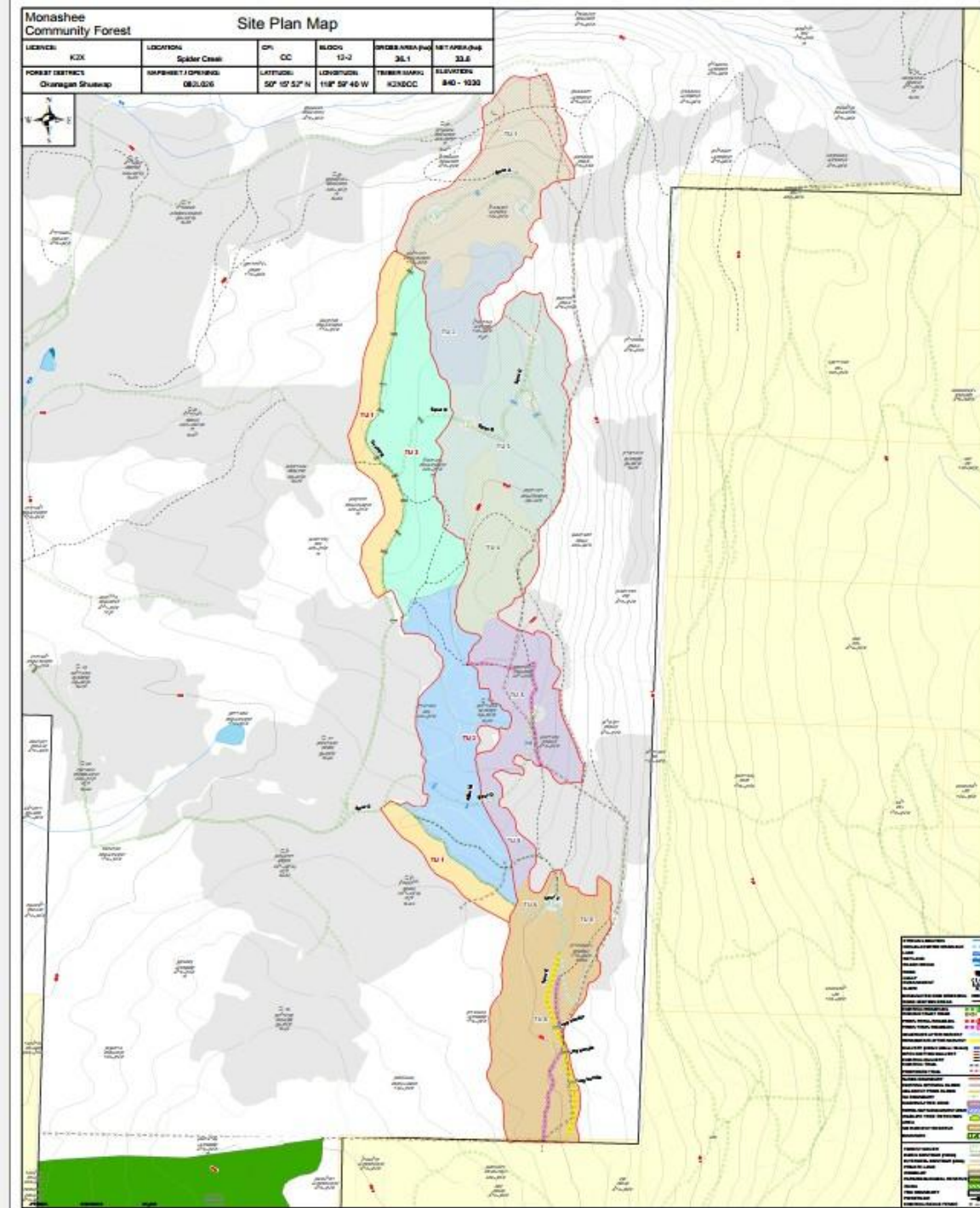
- Resilient forests capable of withstanding wildfire, pests, and climate pressures
- Proactive management, with clear descriptions of current conditions and desired future states
- Strategic interventions that support both ecological function and economic opportunity

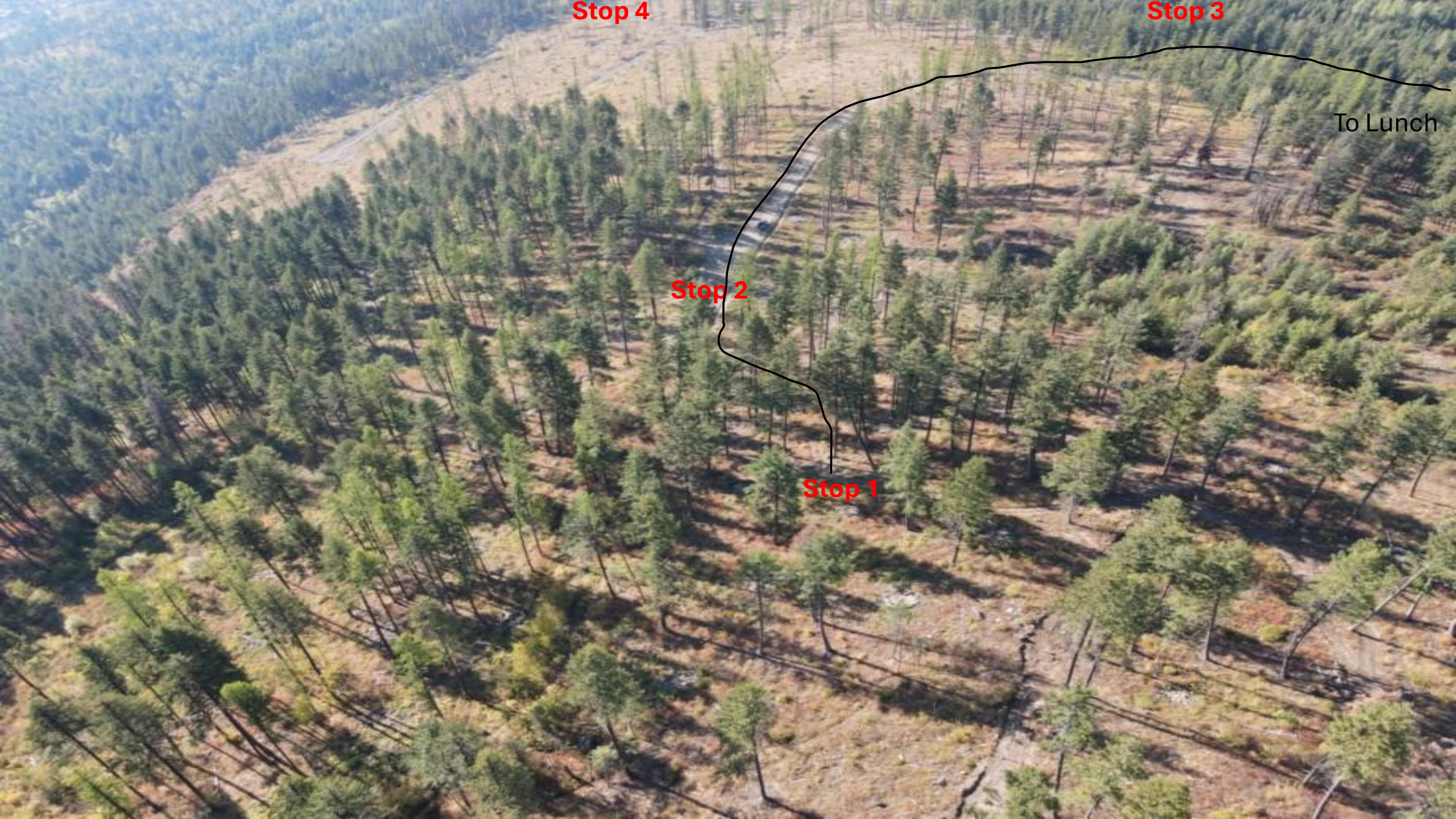


MCF – WRR & Silvopasture Project(s)

This project brings together wildfire risk reduction and working landscapes. By reducing fuels and introducing silvopasture, the project:

- Creates more fire-resilient stands
- Maintains the land as a productive, usable landscape
- Supports long-term maintenance through grazing and active management
- Demonstrates how multiple values can be achieved on the same footprint





Stop 4

Stop 3

To Lunch

Stop 2

Stop 1

Day's Agenda and Instructions

- 8:45 am Leave Vernon Lodge on Buses.
- 9:45 am arrive at the lunch gathering spot.
- 9:45am to 10:00am divide into groups and prepare for walking.
- 10:00am to 10:30 walk to first stops.
- 10:30 -11:00am first stop.
- 11:00am to 11:15 walk to next stop.
- 11:15 to 11:45am second stop.
- 11:45-12:00pm walk to lunch location.
- **12:00-1:00pm lunch.**
- 1:00pm-1:15pm walk to third stop.
- 1:15 to 1:45pm third stop.
- 1:45 to 2:00pm walk to fourth and final stop.
- 2:00pm to 2:30pm fourth stop.
- 2:30pm to 2:45pm walk back to lunch spot.
- 2:45pm to 3:30pm wrap up and networking.
- **3:30pm load onto busses.**
- 4:30pm return to Vernon Lodge.

Final Instructions

- Safety Hazards
- Please follow the speakers, guides and bus drivers' instructions.

