



Wildfire planning in the Harrop-Procter Community Forest

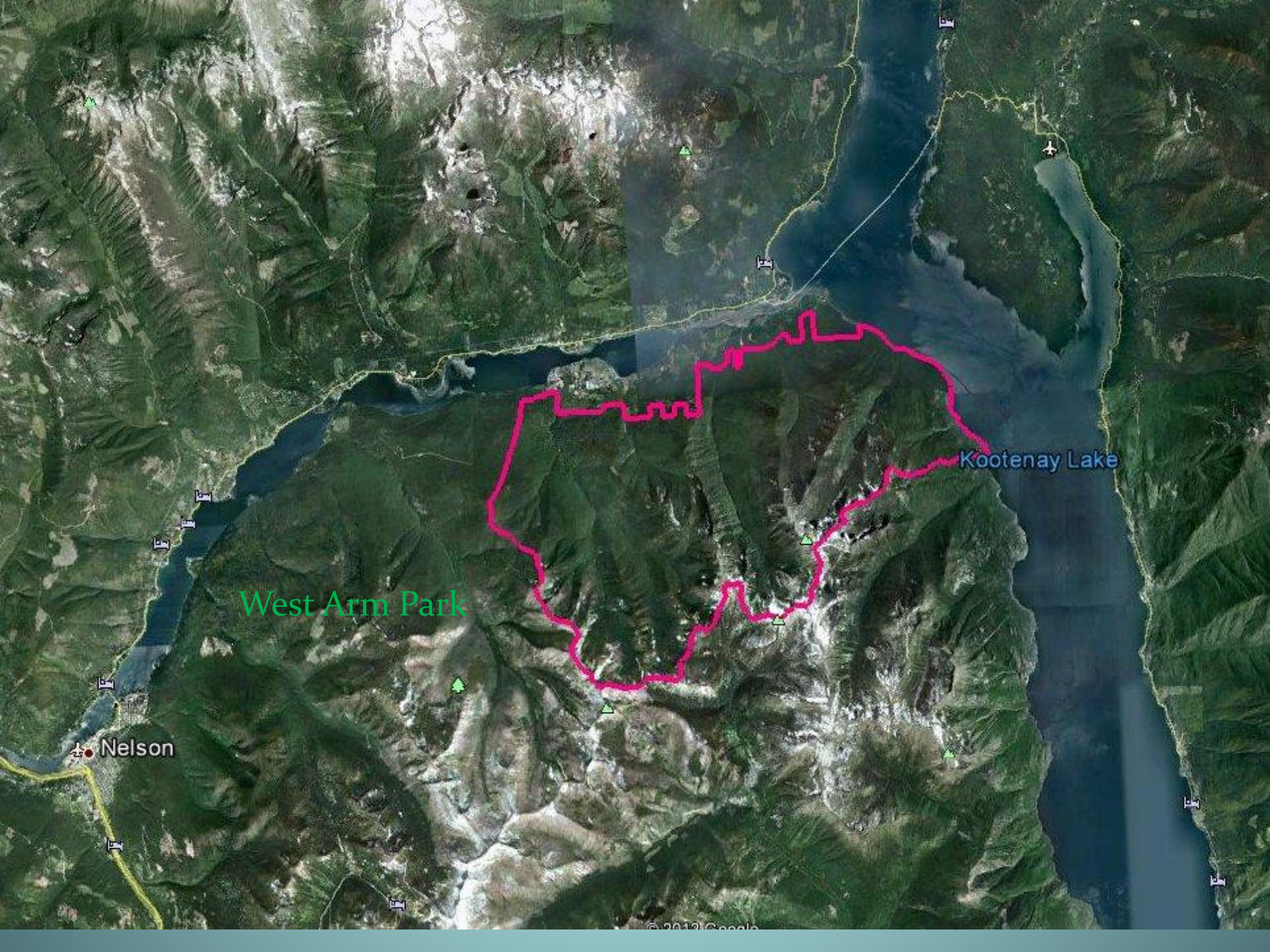
BCCFA conference

June 4, 2026

Erik Leslie, RPF

Forest Manager, Harrop-Procter Community Co-operative



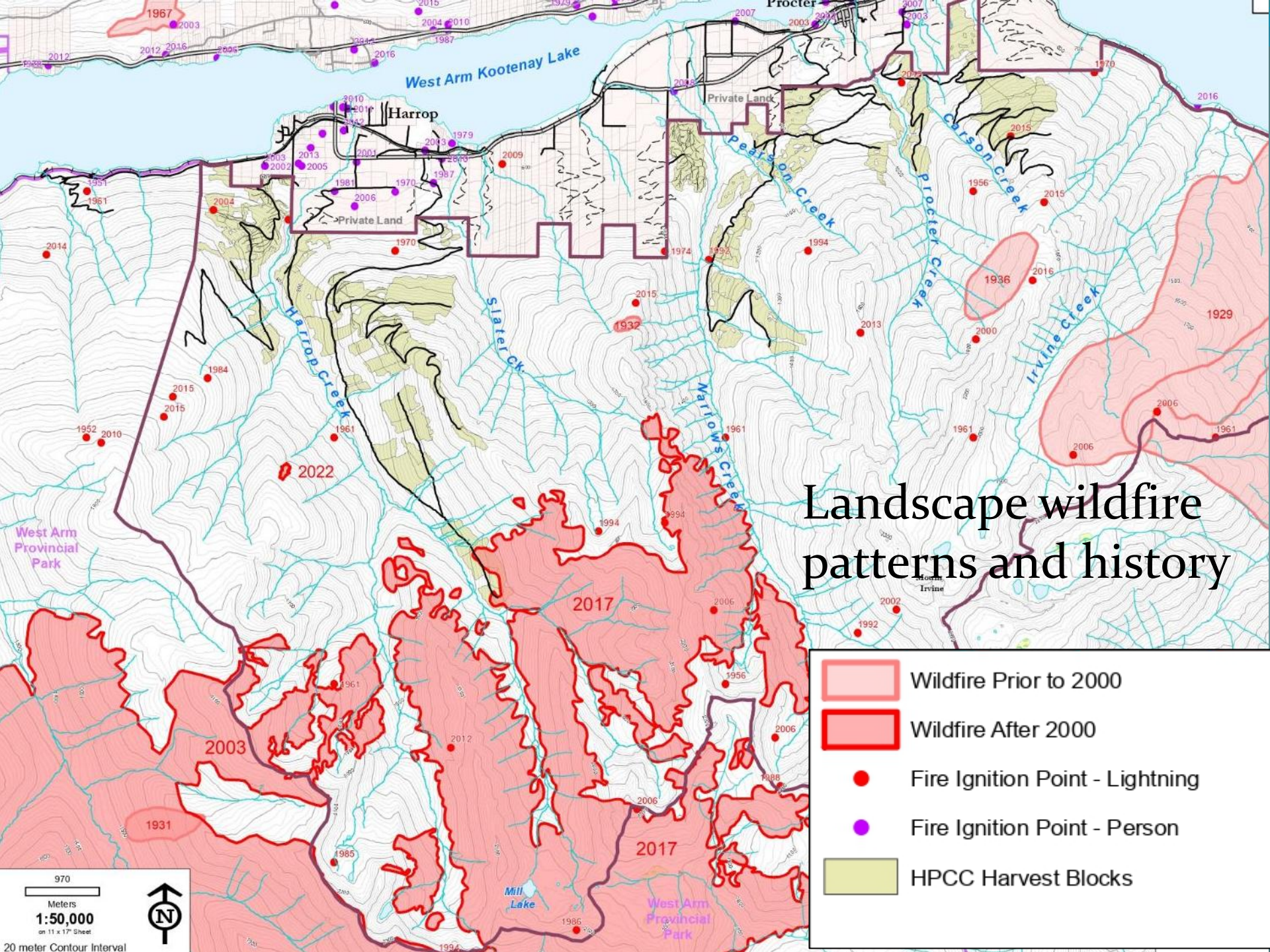


West Arm Park

Kootenay Lake

Nelson





Landscape wildfire patterns and history

- Wildfire Prior to 2000
- Wildfire After 2000
- Fire Ignition Point - Lightning
- Fire Ignition Point - Person
- HPCC Harvest Blocks

970
Meters
1:50,000
on 11 x 17" Sheet
20 meter Contour Interval



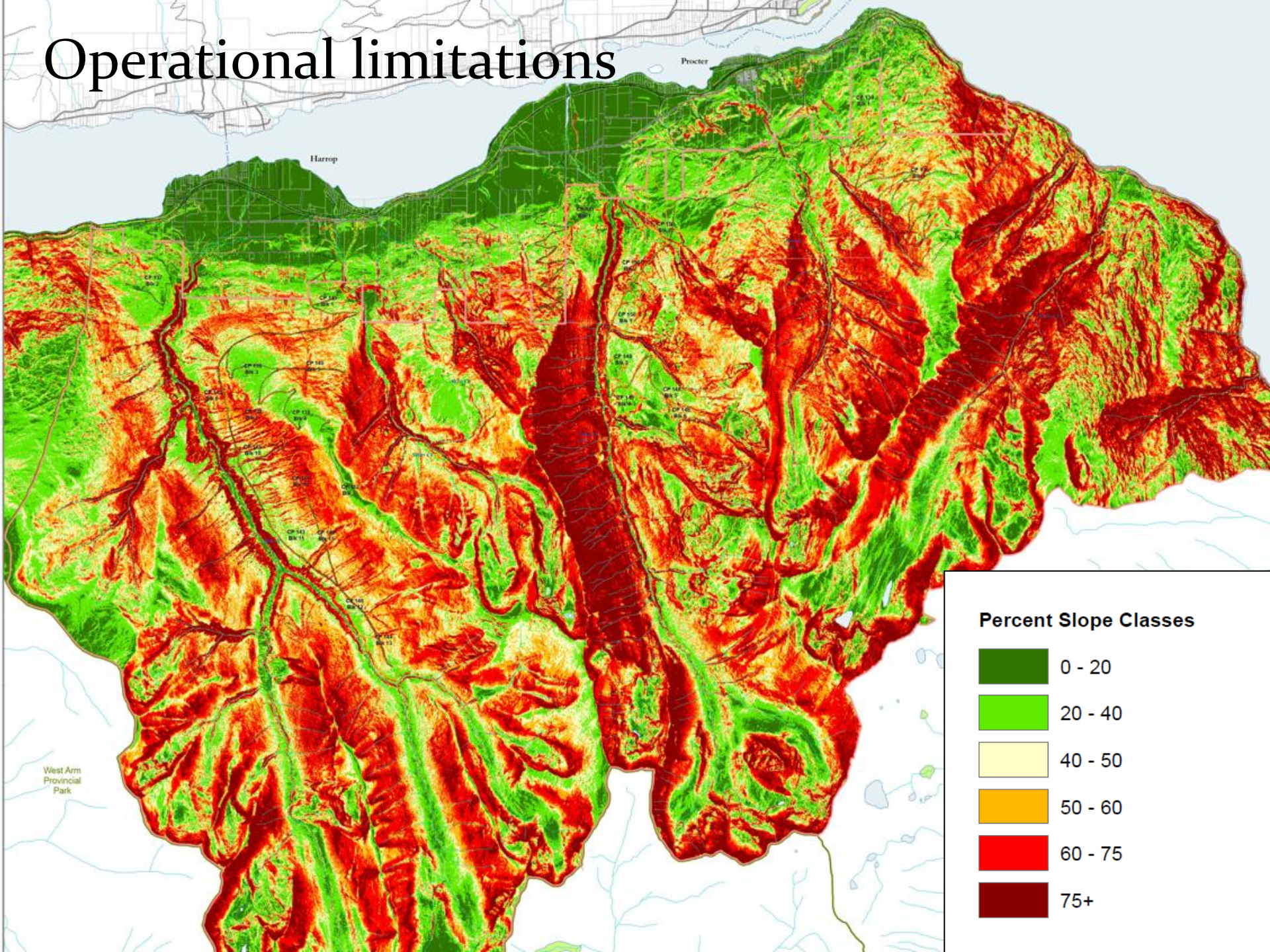


Discuss with local experts

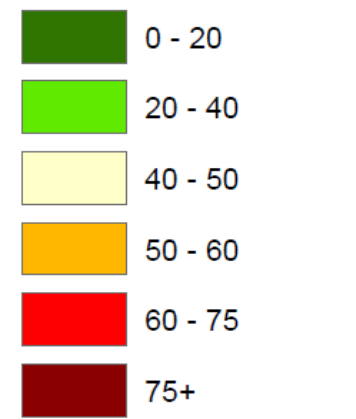


Discuss with local experts

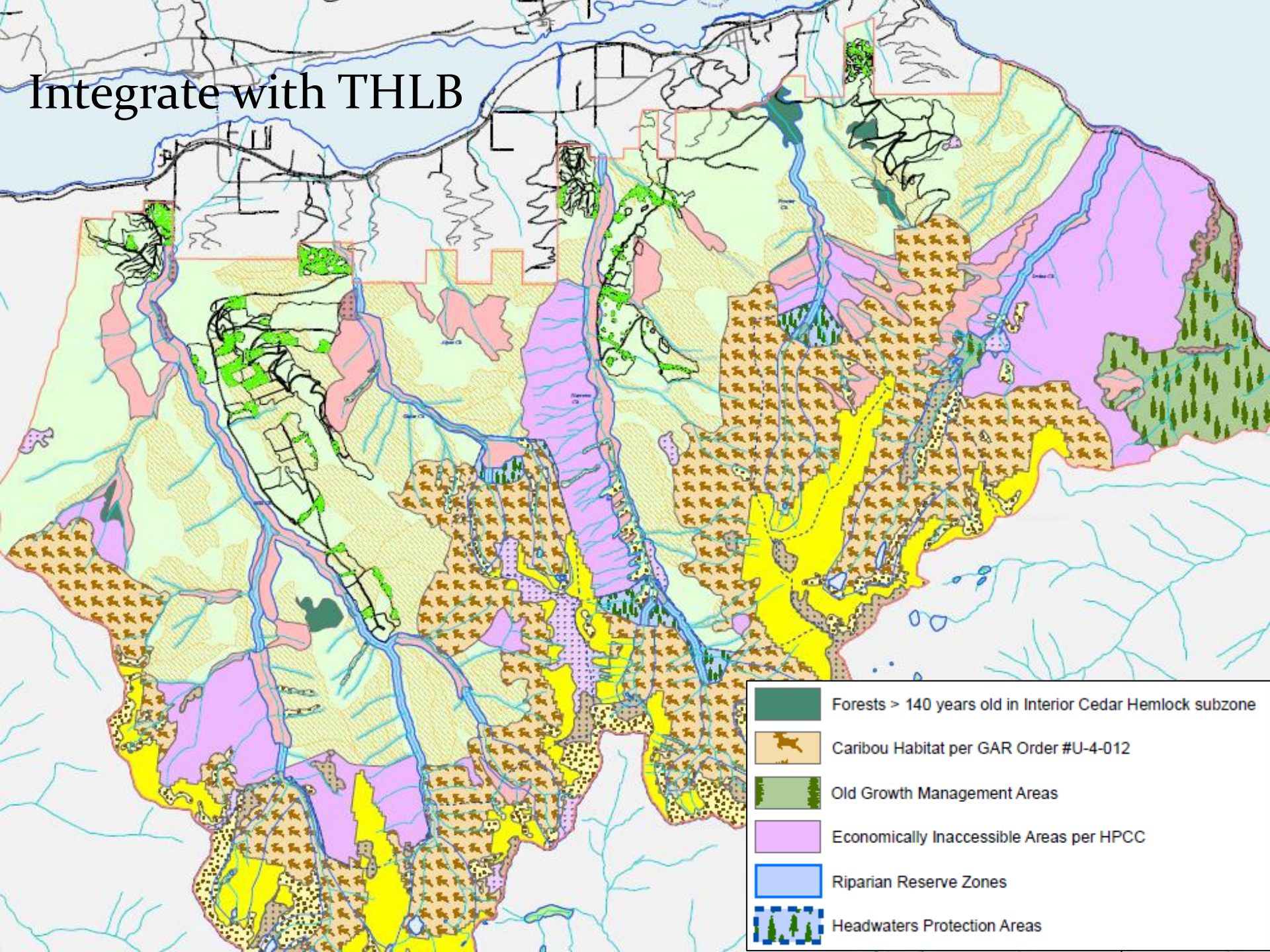
Operational limitations



Percent Slope Classes



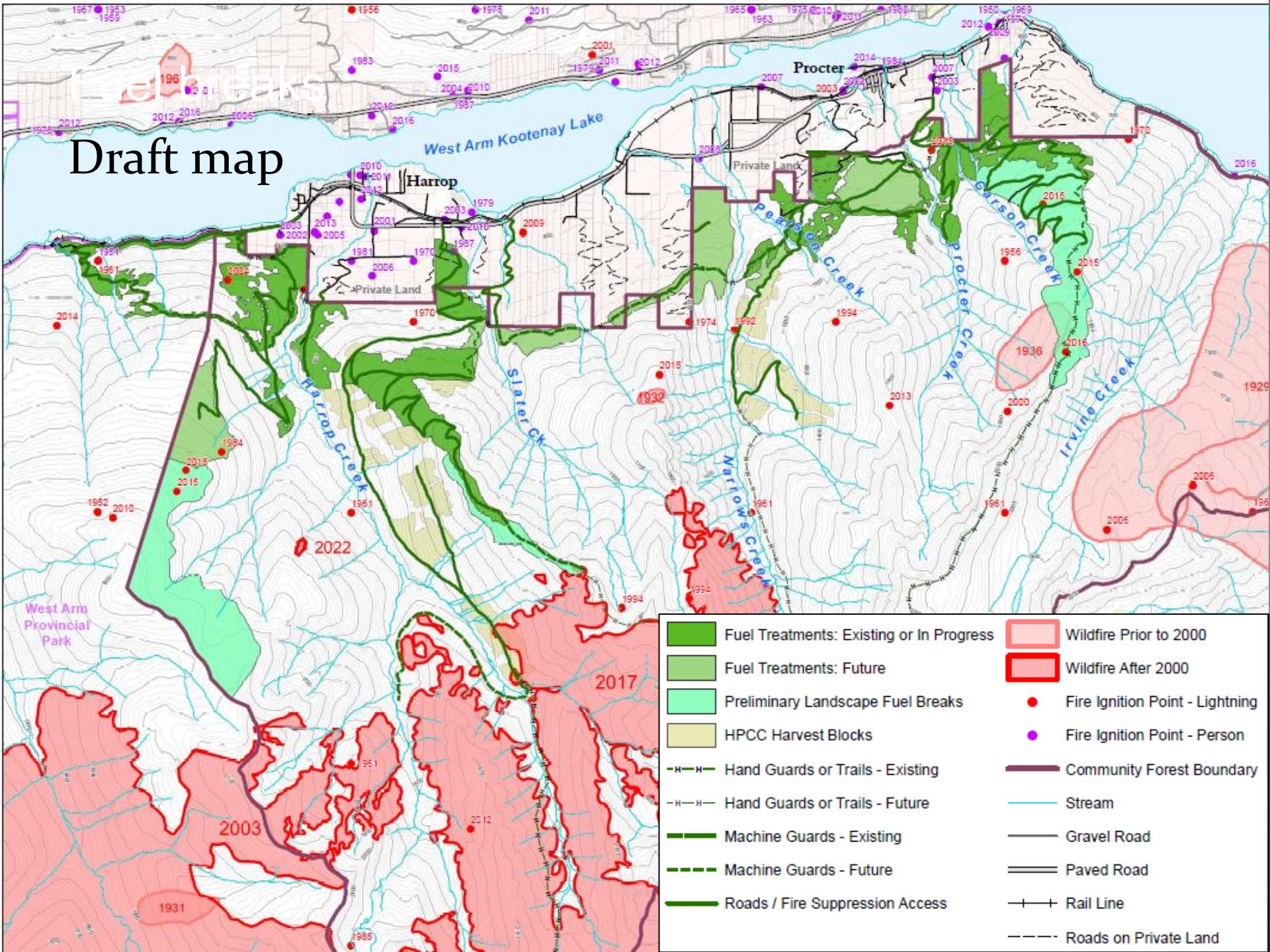
Integrate with THLB



- Forests > 140 years old in Interior Cedar Hemlock subzone
- Caribou Habitat per GAR Order #U-4-012
- Old Growth Management Areas
- Economically Inaccessible Areas per HPCC
- Riparian Reserve Zones
- Headwaters Protection Areas

Firebreaks

Draft map



- | | |
|--|---------------------------------|
| Fuel Treatments: Existing or In Progress | Wildfire Prior to 2000 |
| Fuel Treatments: Future | Wildfire After 2000 |
| Preliminary Landscape Fuel Breaks | Fire Ignition Point - Lightning |
| HPC Harvest Blocks | Fire Ignition Point - Person |
| Hand Guards or Trails - Existing | Community Forest Boundary |
| Hand Guards or Trails - Future | Stream |
| Machine Guards - Existing | Gravel Road |
| Machine Guards - Future | Paved Road |
| Roads / Fire Suppression Access | Rail Line |
| | Roads on Private Land |

Implement



Fire management planning steps

- Understand the landscape & wildfire patterns
 - Discuss with wildfire experts
- Consider operational limitations
 - Terrain and access
 - Defensibility
- Integrate THLB/ total chance planning
- Draft landscape fuel break map
 - Coordinate with adjacent land managers
- Share, discuss, implement, adjust